

BARKAT HIRING COMPANY

CRANE & FORKLIFT OWNERS

11 & 13, SHROFF BHUVAN, 1ST FLOOR, CARNAC BUNDER, 159, P.D'MELLO ROAD, MUMBAI - 400 001.

PHONE : 2261 3009 / 2261 3870 / 2262 1448 • FAX : 91-22-2261 5990.

EMAIL : barkat@bom5.vsnl.net.in

MR. PREET BEDI - 98200 22719 • MR. AMAR BEDI - 98200 28580.

OPERATIONAL INFORMATION

P&H[®] 9150

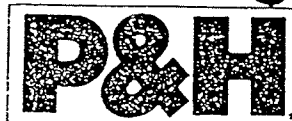
150 TON

MOBILE CRANE

PCSA CLASS 12-847

**DO NOT OPERATE THIS MACHINE UNLESS YOU READ
AND UNDERSTAND THE INFORMATION IN THIS BOOK.**

Harnischfeger



milwaukee wisconsin. 53201

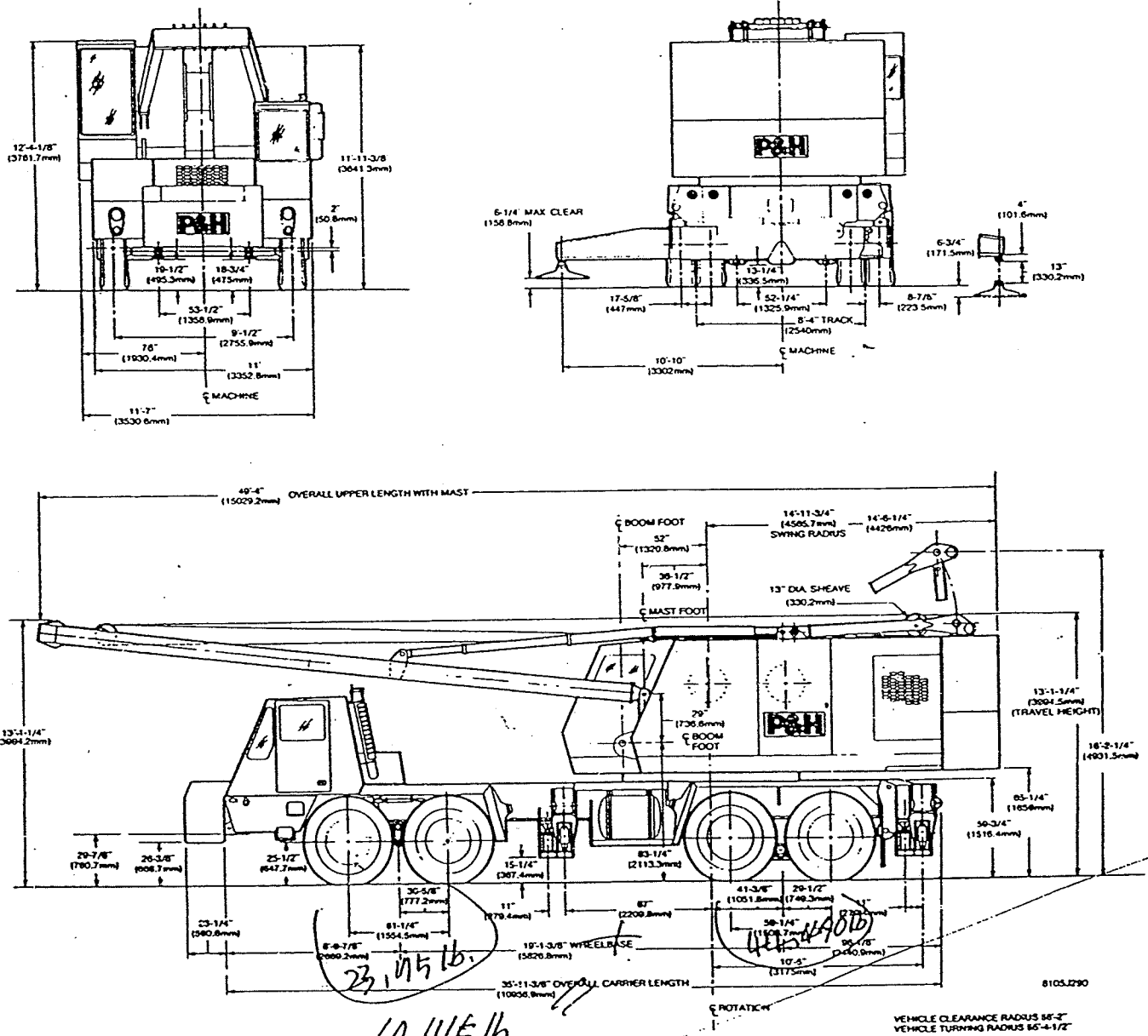
PERFORMANCE:

(Based on Cummins NTC-300 Engine)

ON HIGHWAY: 15 forward speeds, 3 reverse speeds. Performance in highest and lowest gear based on engine @ full load RPM and 117,500 lb. (53,288 kg) GVW (class I, good surface road). (Rockwell Axles).
 Lowest Gear: 3 MPH (4.9 km/h) to 22.4 percent grade. Highest Gear: 41.9 MPH (67.4 km/h) to 0.0 percent grade.

OFF HIGHWAY: 5 forward speeds, 1 reverse speed. Performance in lowest gear ratio based on engine @ max. torque RPM and 117,500 (53,288 kg) GVW (class II road). (Rockwell Axles). 1.3 MPH (2.1 km/h) to 30.0 percent grade.

GENERAL DIMENSIONS:



부품 재원본 (중량) 61.445 lb.

MISCELLANEOUS WEIGHTS	WEIGHT	
	Lbs.	Kg.
4 Floats (Std. 30" Dia.)	440	200
Boom Inserts — 10 Fl. (3 M)	830	376
20 Fl. (6.1 M)	1220	553
30 Fl. (9.1 M)	1720	780
50 Fl. (15.2 M)	2780	1261
Jib Base	365	165
Tip	470	213
Strut	420	191
Inserts — 10 Fl. (3 M)	213	97
20 Fl. (6.1 M)	373	169
Hook Blocks (Refer to Spec. Table)		

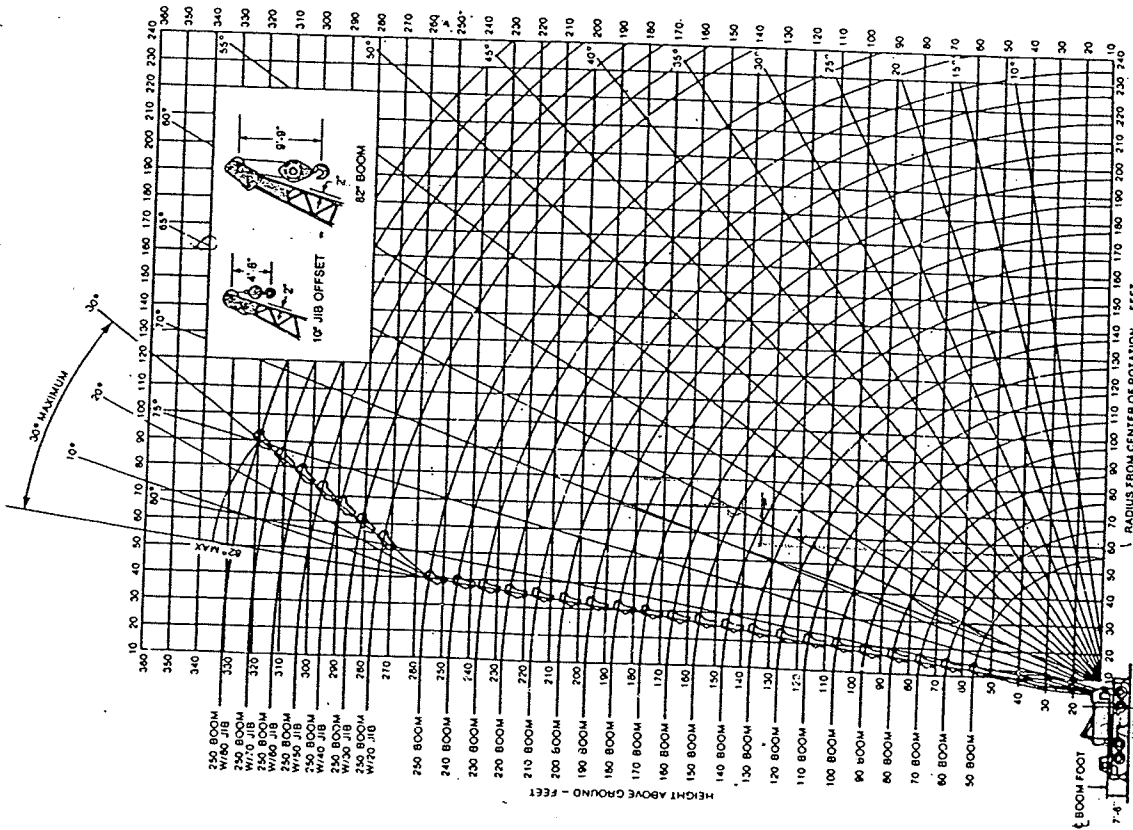
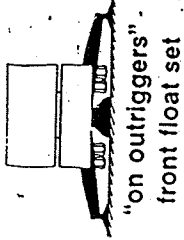
TIRE RATING CHART		
ALLOWABLE LOAD PER TIRE		
TIRE SIZE	STATIC TO 1.5 MPH (2.41 KM/HR)	STATIC TO 50 MPH (80.5 KM/HR)
14.00 x 24 LOAD RANGE: L 20 PLY RATING	29170 LBS. (13126.5 KG) AT 100 PSI (6.89 BARS) (7.03 Kg/Cm ²)	10730 LBS. (4828.5 KG) AT 100 PSI (6.89 BARS) (7.03 Kg/Cm ²)

working ranges



RATINGS LIFT CRANE SERVICE

69" x 69" boom
two counterweights and heavy duty tip (25')
one bumper counterweight



HEAVY DUTY BOOM - TWO COUNTERWEIGHTS
RADIUS FROM CENTER OF ROTATION - FEET
2105J187

rated boom loads in pounds

Boom Length (ft)	Load Radius (ft)	Boom Angle Δ°	Boom Point Elev. (ft)	Rated Load (lbs)			Boom Length (ft)	Load Radius (ft)	Boom Angle Δ°	Boom Point Elev. (ft)	Rated Load (lbs)		
				360°	Over Slide	Over Rear					360°	Over Slide	Over Rear
50	12	82.0	56.6	307,000	307,000	307,000	60	14	81.4	66.4	293,500	293,500	293,500
	13	80.9	56.5	278,500	278,500	278,500		15	80.5	66.3	245,000	245,000	245,000
	14	79.7	56.3	253,500	253,500	253,500		16	79.5	66.1	228,100	228,100	228,100
	15	78.5	56.1	231,500	231,500	231,500		17	78.5	65.9	210,500	210,500	210,500
	16	77.4	55.8	210,500	210,500	210,500		18	77.6	65.6	201,000	201,000	201,000
	17	76.2	55.6	191,000	191,000	191,000		19	76.6	65.4	190,400	190,400	190,400
	18	75.0	55.3	173,500	173,500	173,500		20	75.6	65.1	180,900	180,900	180,900
	19	73.8	55.0	158,000	158,000	158,000		21	74.6	64.8	172,300	172,300	172,300
	20	72.6	54.7	144,000	144,000	144,000		22	73.6	64.5	164,900	164,900	164,900
	21	71.4	54.3	131,500	131,500	131,500		23	72.6	64.2	157,300	157,300	157,300
	22	70.2	54.0	120,500	120,500	120,500		24	71.6	63.9	150,700	150,700	150,700
	23	68.9	53.6	110,500	110,500	110,500		25	70.6	63.5	144,700	144,700	144,700
	24	67.7	53.2	101,500	101,500	101,500		26	69.5	63.1	139,100	139,100	139,100
	25	66.4	52.7	93,500	93,500	93,500		27	68.5	62.7	134,000	134,000	134,000
	26	65.2	52.2	86,500	86,500	86,500		28	67.5	62.3	129,200	129,200	129,200
	27	63.9	51.7	80,500	80,500	80,500		29	66.4	61.9	124,700	124,700	124,700
	28	62.6	51.2	75,500	75,500	75,500		30	65.4	61.4	120,800	120,800	120,800
	29	61.3	50.7	71,500	71,500	71,500		32	63.3	60.4	113,000	113,000	113,000
	30	60.0	50.1	68,500	68,500	68,500		34	61.1	59.3	108,400	108,400	108,400
	32	57.3	48.8	63,000	63,000	63,000		36	58.9	58.1	99,100	99,100	99,100
	34	54.5	47.4	58,500	58,500	58,500		38	56.6	56.8	91,500	91,500	91,500
	36	51.8	45.8	55,000	55,000	55,000		40	54.2	55.4	84,900	84,900	84,900
	38	48.5	44.1	51,500	51,500	51,500		45	48.1	51.2	71,700	71,700	71,700
	40	45.4	42.2	48,700	48,700	48,700		50	41.2	46.0	61,900	61,900	61,900
	45	36.4	36.2	41,000	41,000	41,000		55	33.1	39.2	54,300	54,300	54,300
	50	24.9	27.5	27,500	27,500	27,500		60	22.6	29.5	47,200	47,200	47,200

LIFTING OVER BOOM POINT WITH JIB ATTACHED

JIB LENGTH	20 FT.	30 FT.	40 FT.	50 FT.	60 FT.	70 FT.	80 FT.
EFFECTIVE JIB WT. - LBS.	1500	1500	2000	2500	3000	3000	3600
EFFECTIVE JIB HOOK WT.	1600	1600	1600	1600	1600	1600	1600

ALSO DEDUCT TWICE THE WEIGHT OF ANY LOAD SUSPENDED FROM JIB HOOK.

WARNING
Do not attempt to lift more than rated load at load radius shown, or lift where no radius or load is listed, as machine may tip or collapse.
Do not attempt to lift more than rated loads shown in shaded areas — a machine failure may occur.

"on outriggers"

front float set

two counterweights and one bumper counterweight

rated boom loads in pounds													
Boom Length (ft)	Load Radius (ft)	Boom Angle Δ°	Boom Port Elev. (ft)	Rated Load (lbs)			Boom Length (ft)	Load Radius (ft)	Boom Angle Δ°	Boom Port Elev. (ft)	Rated Load (lbs)		
				360°	Over Side	Over Rear					360°	Over Side	Over Rear
70	15	81.8	76.4	196,100	196,100	196,100	80	17	81.4	86.2	180,500	180,500	180,500
	16	81.0	76.2	196,700	196,700	196,700		18	80.7	86.1	178,400	178,400	178,400
	17	80.2	76.1	181,900	181,900	181,900		19	80.0	85.9	176,400	176,400	176,400
	18	79.4	75.9	189,600	189,600	189,600		20	79.2	85.7	174,500	174,500	174,500
	19	78.5	75.7	187,400	187,400	187,400		21	78.5	85.5	172,300	172,300	172,300
	20	77.7	75.4	180,900	180,900	180,900		22	77.8	85.2	164,500	164,500	164,500
	21	76.8	75.2	172,300	172,300	172,300		23	77.0	85.0	157,300	157,300	157,300
	22	76.0	74.9	164,500	164,500	164,500		24	76.3	84.8	150,700	150,700	150,700
	23	75.1	74.7	157,300	157,300	157,300		25	75.6	84.5	144,700	144,700	144,700
	24	74.3	74.4	144,700	144,700	144,700		26	74.8	84.2	139,100	139,100	139,100
	25	73.4	74.1	144,700	144,700	144,700		27	74.1	83.9	134,000	134,000	134,000
	26	72.6	73.8	139,100	139,100	139,100		28	73.3	83.6	129,200	129,200	129,200
	27	71.7	73.4	134,000	134,000	134,000		29	72.6	83.3	124,700	124,700	124,700
	28	70.9	73.1	129,200	129,200	129,200		30	71.8	83.0	120,600	120,600	120,600
	29	70.0	72.7	124,700	124,700	124,700		32	70.3	82.3	113,000	113,000	113,000
	30	69.1	72.3	120,600	120,600	120,600		34	68.8	81.5	106,400	106,400	106,400
	32	67.3	71.5	113,000	113,000	113,000		36	67.2	80.7	99,100	99,100	99,100
	34	65.5	70.6	106,400	106,400	106,400		38	65.7	79.8	91,500	91,500	91,500
	36	63.7	69.8	99,200	99,200	99,200		40	64.1	78.8	84,900	84,900	84,900
	38	61.9	68.5	91,600	91,600	91,600		45	60.0	76.1	71,700	71,700	71,700
	40	60.0	67.4	85,000	85,000	85,000		50	55.7	72.8	61,900	61,900	61,900
	45	55.1	64.1	71,900	71,900	71,900		55	51.2	69.1	54,300	54,300	54,300
	50	49.9	60.2	62,000	62,000	62,000		60	46.4	64.6	48,200	48,200	48,200
	55	44.2	55.4	54,400	54,400	54,400		65	41.2	59.3	43,200	43,200	43,200
	60	37.9	49.6	48,300	48,300	48,300		70	35.4	52.8	39,100	39,100	39,100
	65	30.5	42.0	43,300	43,300	43,300		75	28.5	44.6	35,600	35,600	35,600
	70	20.9	31.3	39,200	39,200	39,200		80	19.5	33.1	32,600	32,600	32,600

rated boom loads in pounds													
Boom Length (ft)	Load Radius (ft)	Boom Angle Δ°	Boom Port Elev. (ft)	Rated Load (lbs)			Boom Length (ft)	Load Radius (ft)	Boom Angle Δ°	Boom Port Elev. (ft)	Rated Load (lbs)		
				360°	Over Side	Over Rear					360°	Over Side	Over Rear
90	16	81.7	96.2	192,300	192,300	192,300	100	19	82.0	106.1	153,700	153,700	153,700
	19	81.1	96.0	190,400	190,400	190,400		20	81.4	106.0	152,200	152,200	152,200
	20	80.5	95.9	186,900	186,900	186,900		21	80.8	105.8	150,800	150,800	150,800
	21	79.8	95.7	172,300	172,300	172,300		22	80.3	105.7	149,400	149,400	149,400
	22	79.2	95.5	164,500	164,500	164,500		23	79.7	105.5	148,100	148,100	148,100
	23	78.5	95.3	157,300	157,300	157,300		24	79.1	105.3	146,300	146,300	146,300
	24	77.9	95.0	150,700	150,700	150,700		25	78.5	105.1	144,500	144,500	144,500
	25	77.2	94.8	144,700	144,700	144,700		26	77.9	104.8	139,100	139,100	139,100
	26	76.5	94.6	139,100	139,100	139,100		27	77.3	104.6	134,000	134,000	134,000
	27	75.9	94.3	134,000	134,000	134,000		28	76.7	104.4	129,200	129,200	129,200
	28	75.2	94.0	129,200	129,200	129,200		29	76.1	104.1	124,700	124,700	124,700
	29	74.6	93.8	124,700	124,700	124,700		30	75.6	103.9	120,600	120,600	120,600
	30	73.9	93.5	120,600	120,600	120,600		32	74.4	103.3	113,000	113,000	113,000
	32	72.6	92.8	113,000	113,000	113,000		34	73.2	102.7	106,400	106,400	106,400
	34	71.2	92.2	106,400	106,400	106,400		36	72.0	102.1	98,900	98,900	98,900
	36	69.9	91.4	99,000	99,000	99,000		38	70.8	101.4	91,400	91,400	91,400
	38	68.5	90.7	91,600	91,600	91,600		40	69.5	100.6	84,700	84,700	84,700
	40	67.1	89.8	84,800	84,800	84,800		45	66.4	96.5	71,600	71,600	71,600
	45	63.6	87.5	71,700	71,700	71,700		50	63.3	96.1	61,700	61,700	61,700
	50	60.0	84.7	61,900	61,900	61,900		55	60.0	93.4	54,200	54,200	54,200
	55	56.2	81.5	54,300	54,300	54,300		60	56.6	90.2	48,000	48,000	48,000
	60	52.3	77.9	48,200	48,200	48,200		65	53.1	86.6	43,100	43,100	43,100
	65	48.1	73.6	43,200	43,200	43,200		70	49.4	82.6	38,900	38,900	38,900
	70	43.6	68.7	39,000	39,000	39,000		75	45.5	77.9	35,500	35,500	35,500
	75	38.7	62.8	35,600	35,600	35,600		80	41.3	72.5	32,500	32,500	32,500
	80	33.3	55.8	32,600	32,600	32,600		85	36.7	66.2	29,900	29,900	29,900
	85	26.8	47.0	30,000	30,000	30,000		90	31.5	58.7	27,600	27,600	27,600
	90	18.3	34.7	27,700	27,700	27,700		95	25.4	49.3	25,600	25,600	25,600
	100	19.2	39.3	23,800	23,800	23,800		100	19.2	39.3	23,800	23,800	23,800

92Z2281

WARNING ⚠

Do not attempt to lift more than rated load at load radius shown, or lift where no radius or load is listed, as machine may tip or collapse.

Do not attempt to lift more than rated loads shown in shaded areas — a machine failure may occur.

"on outriggers" front float set

two counterweights and one bumper counterweight

0.3048

rated boom loads in pounds

Boom Length (ft)	Load Radius (ft)	Boom Angle Δ°	Boom Point Elev. (ft)	Rated Load (lbs)		
				360°	Over Side	Over Rear
110	21	01.7	116.0	162,500	162,500	162,500
	22	01.1	115.8	161,200	161,200	161,200
	23	00.6	115.6	157,300	157,300	157,300
	24	00.1	115.5	150,700	150,700	150,700
	25	00.6	115.3	144,700	144,700	144,700
	26	00.0	115.1	139,100	139,100	139,100
	27	00.5	114.9	134,000	134,000	134,000
	28	00.0	114.6	129,200	129,200	129,200
	29	00.4	114.4	124,700	124,700	124,700
	30	00.9	114.2	120,600	120,600	120,600
	32	00.8	113.7	113,000	113,000	113,000
	34	00.4	113.1	106,400	106,400	106,400
	36	00.7	112.5	98,700	98,700	98,700
	38	00.6	111.9	91,200	91,200	91,200
	40	00.1	111.3	84,500	84,500	84,500
	45	00.7	109.4	71,400	71,400	71,400
	50	00.9	107.3	61,400	61,400	61,400
	55	03.0	104.8	53,900	53,900	53,900
	60	00.0	102.0	47,800	47,800	47,800
	65	00.9	99.9	42,800	42,800	42,800
	70	03.7	95.4	38,600	38,600	38,600
	75	00.4	91.4	35,300	35,300	35,300
	80	06.9	87.0	32,300	32,300	32,300
	85	03.2	81.9	29,700	29,700	29,700
	90	00.2	76.1	27,400	27,400	27,400
	95	03.9	69.4	25,400	25,400	25,400
	100	01.0	63.1	23,600	23,600	23,600
	110	08.3	40.9	20,500	20,500	21,400

rated boom loads in pounds

Boom Length (ft)	Load Radius (ft)	Boom Angle Δ°	Boom Point Elev. (ft)	Rated Load (lbs)		
				360°	Over Side	Over Rear
130	24	01.6	135.7	116,300	116,300	116,300
	25	01.2	135.6	115,100	115,100	115,100
	26	00.7	135.4	113,900	113,900	113,900
	27	00.3	135.2	112,700	112,700	112,700
	28	00.8	135.1	111,500	111,500	111,500
	29	00.4	134.9	109,800	109,800	109,800
	30	00.9	134.7	107,700	107,700	107,700
	32	00.0	134.2	105,600	105,600	105,600
	34	00.1	133.8	103,600	103,600	103,600
	36	00.2	133.3	99,400	99,400	99,400
	38	00.3	132.8	96,800	96,800	96,800
	40	00.4	132.2	94,100	94,100	94,100
	45	00.1	130.7	71,000	71,000	71,000
	50	00.8	128.9	61,000	61,000	61,000
	55	07.4	126.9	53,500	53,500	53,500
	60	05.0	124.7	47,400	47,400	47,400
	65	02.5	122.1	42,400	42,400	42,400
	70	00.0	119.4	38,200	38,200	38,200
	75	07.4	116.3	34,800	34,800	34,800
	80	04.7	112.9	31,800	31,800	31,800
	85	02.0	109.1	29,200	29,200	29,200
	90	09.1	104.9	26,900	26,900	26,900
	95	06.1	100.3	24,900	24,900	24,900
	100	03.6	96.2	23,100	23,100	23,100
	110	06.7	84.2	20,100	20,100	20,100
	120	08.4	68.3	17,700	17,700	20,800
	130	06.8	43.9	15,800	15,800	18,100

3222291

WARNING

Do not attempt to lift more than rated load at load radius shown, or lift where no radius or load is listed, as machine may tip or collapse.
Do not attempt to lift more than rated loads shown in shaded areas — a machine failure may occur.

"on outriggers"

front float set

two counterweights and one bumper counterweight

rated boom loads in pounds													
Boom Length (ft)	Load Radius (ft)	Boom Angle Δ°	Boom Point Elev. (ft)	Rated Load (lbs)			Boom Length (ft)	Load Radius (ft)	Boom Angle Δ°	Boom Point Elev. (ft)	Rated Load (lbs)		
				360°	Over Side	Over Rear					360°	Over Side	Over Rear
150	28	82.0	155.7	84,200	84,900	84,900	160	28	81.8	165.5	87,400	87,400	87,400
	27	81.6	155.3	85,100	85,100	85,100		29	81.4	165.3	86,900	86,900	86,900
	28	81.2	155.3	85,200	85,200	85,200		30	81.0	165.2	86,100	86,100	86,100
	29	80.8	155.2	84,400	84,400	84,400		32	80.3	164.8	84,600	84,600	84,600
	30	80.4	155.0	83,600	83,600	83,600		34	79.6	164.4	83,100	83,100	83,100
	32	79.7	154.7	82,000	82,000	82,000		36	78.9	164.1	81,700	81,700	81,700
	34	78.9	154.3	80,400	80,400	80,400		38	78.1	163.6	80,100	80,100	80,100
	36	78.1	153.8	80,900	80,900	80,900		40	77.4	163.2	81,600	81,600	81,600
	38	77.3	153.4	81,500	81,500	81,500		45	75.5	162.0	70,400	70,400	77,400
	40	76.5	152.9	81,800	81,800	81,800		50	73.7	160.5	60,400	60,400	68,400
	45	74.6	151.6	70,700	70,700	70,700		55	71.8	159.0	53,000	53,000	59,000
	50	72.6	150.1	60,700	60,700	60,700		60	69.9	157.2	46,800	46,800	53,400
	55	70.5	148.4	53,200	53,200	53,200		65	68.0	155.2	41,800	41,800	47,800
	60	68.5	146.5	47,100	47,100	47,100		70	66.0	153.1	37,800	37,800	43,200
	65	66.4	144.4	43,100	43,100	43,100		75	64.1	150.7	34,300	34,300	39,300
	70	64.3	142.0	38,100	38,100	38,100		80	62.0	148.1	31,300	31,300	36,100
	75	62.2	139.5	34,600	34,600	34,600		85	60.0	145.3	28,700	28,700	33,200
	80	60.0	136.7	31,800	31,800	31,800		90	57.9	142.3	26,400	26,400	30,700
	85	57.8	133.6	28,900	28,900	28,900		95	55.8	139.0	24,400	24,400	28,400
	90	55.5	130.3	26,700	26,700	26,700		100	54.0	136.1	22,600	22,600	26,400
	95	53.1	126.6	24,700	24,700	24,700		110	49.4	128.2	19,500	19,500	23,000
	100	51.2	123.5	22,900	22,900	22,900		120	44.5	118.7	17,200	17,200	20,200
	110	46.0	114.6	19,800	19,800	19,800		130	39.1	107.4	15,200	15,200	18,100
	120	40.4	103.8	17,500	17,500	17,500		140	33.0	93.5	13,400	13,400	16,100
	130	34.1	90.5	15,500	15,500	15,500		150	25.6	75.4	11,900	11,900	14,400
	140	26.4	73.2	13,700	13,700	13,700		160	15.1	48.0	10,600	10,600	12,700
	150	15.6	46.7	12,200	12,200	12,200							

rated boom loads in pounds													
Boom Length (ft)	Load Radius (ft)	Boom Angle Δ°	Boom Point Elev. (ft)	Rated Load (lbs)			Boom Length (ft)	Load Radius (ft)	Boom Angle Δ°	Boom Point Elev. (ft)	Rated Load (lbs)		
				360°	Over Side	Over Rear					360°	Over Side	Over Rear
170	29	81.9	175.4	79,900	79,900	79,900	180	30	82.0	185.4	73,500	73,500	73,500
	30	81.6	175.3	79,200	79,200	79,200		32	81.4	185.1	72,500	72,500	72,500
	32	80.9	175.0	78,000	78,000	78,000		34	80.8	184.8	71,500	71,500	71,500
	34	80.2	174.6	76,900	76,900	76,900		36	80.1	184.4	70,600	70,600	70,600
	36	79.5	174.2	75,900	75,900	75,900		38	79.5	184.0	69,700	69,700	69,700
	38	78.8	173.9	74,700	74,700	74,700		40	78.8	183.7	68,900	68,900	68,900
	40	78.1	173.4	73,600	73,600	73,600		45	77.2	182.8	66,400	66,400	66,400
	45	76.4	172.3	70,200	70,200	70,200		50	75.5	181.3	60,000	60,000	60,000
	50	74.7	171.0	60,200	60,200	60,200		55	73.9	179.9	52,500	52,500	52,500
	55	72.9	169.5	52,700	52,700	52,700		60	72.2	178.4	46,400	46,400	46,400
	60	71.1	167.8	46,800	46,800	46,800		65	70.5	176.7	41,300	41,300	41,300
	65	69.3	166.0	41,500	41,500	41,500		70	68.8	174.8	37,400	37,400	37,400
	70	67.5	164.0	37,600	37,600	37,600		75	67.1	172.7	33,900	33,900	33,900
	75	65.7	161.8	34,100	34,100	34,100		80	65.4	170.5	30,800	30,800	30,800
	80	63.8	159.4	31,100	31,100	31,100		85	63.6	168.1	28,200	28,200	28,200
	85	61.9	156.8	28,400	28,400	28,400		90	61.8	165.5	25,900	25,900	25,900
	90	60.0	154.0	26,100	26,100	26,100		95	60.0	162.7	23,900	23,900	23,900
	95	58.0	151.0	24,100	24,100	24,100		100	58.5	160.3	22,100	22,100	22,100
	100	56.4	148.4	22,300	22,300	22,300		110	54.7	153.6	19,100	19,100	19,100
	110	52.3	141.1	19,300	19,300	19,300		120	50.7	145.9	16,800	16,800	16,800
	120	47.8	132.6	17,000	17,000	17,000		130	46.4	137.0	14,800	14,800	14,800
	130	43.1	122.7	15,000	15,000	15,000		140	41.8	126.6	13,000	13,000	13,000
	140	37.9	110.9	13,200	13,200	13,200		150	36.8	114.2	11,500	11,500	11,500
	150	31.9	96.4	11,700	11,700	11,700		160	31.0	99.2	10,200	10,200	10,200
	160	24.8	77.6	10,400	10,400	10,400		170	24.1	79.8	9,000	9,000	9,000
	170	14.6	49.3	9,200	9,200	9,200		180	14.2	50.6	7,900	7,900	7,900

32Z2291

WARNING

Do not attempt to lift more than rated load at load radius shown, or lift where no radius or load is listed, as machine may tip or collapse.


Do not attempt to lift more than rated loads shown in shaded areas — a machine failure may occur.

"on outriggers" front float set
two counterweights and one bumper counterweight

rated boom loads in pounds													
Boom Length (ft)	Load Radius (ft)	Boom Angle Δ°	Boom Point Elev. (ft)	Rated Load (lbs)			Boom Length (ft)	Load Radius (ft)	Boom Angle Δ°	Boom Point Elev. (ft)	Rated Load (lbs)		
				360°	Over Side	Over Rear					360°	Over Side	Over Rear
190	32	81.9	195.2	87,900	87,900	87,900	200	33	82.0	205.2	88,900	88,900	88,900
	34	81.2	194.9	87,900	87,900	87,900		34	81.7	205.0	88,900	88,900	88,900
	36	80.6	194.6	87,100	87,100	87,100		36	81.1	204.7	89,300	89,300	89,300
	38	80.0	194.2	86,800	86,800	86,800		38	80.5	204.4	89,400	89,400	89,400
	40	79.4	193.8	86,800	86,800	86,500		40	79.9	204.0	89,100	89,100	89,100
	45	77.9	192.8	85,800	85,800	85,800		45	78.5	203.0	87,400	87,400	87,400
	50	76.3	191.6	84,700	84,700	84,900		50	77.0	201.9	86,900	86,900	86,900
	55	74.8	190.3	82,900	82,900	82,900		55	75.5	200.7	82,100	82,100	82,100
	60	73.2	188.9	81,100	81,100	81,100		60	74.1	199.3	80,900	80,900	80,900
	65	71.6	187.3	81,000	81,000	81,000		65	72.6	197.8	80,900	80,900	80,900
	70	70.0	185.5	81,000	81,000	81,000		70	71.0	196.1	80,900	80,900	80,900
	75	68.4	183.6	82,800	82,800	82,800		75	69.5	194.3	83,400	83,400	83,400
	80	66.8	181.5	80,800	80,800	80,800		80	68.0	192.3	80,400	80,400	80,400
	85	65.1	179.2	77,900	77,900	77,900		85	66.4	190.2	77,800	77,800	77,800
	90	63.4	176.8	76,800	76,800	76,800		90	64.9	187.9	75,500	75,500	75,500
	95	62.1	174.7	73,800	73,800	73,800		95	63.6	185.9	73,400	73,400	73,400
	100	60.3	171.9	71,800	71,800	71,800		100	62.0	183.3	71,700	71,700	71,700
	110	56.8	165.7	68,800	68,800	68,800		110	58.7	177.6	68,900	68,900	68,900
	120	53.1	158.6	65,800	65,800	65,800		120	55.2	171.0	64,900	64,900	64,900
	130	49.2	150.5	64,500	64,500	64,500		130	51.7	163.5	63,300	63,300	63,300
	140	45.1	141.2	62,700	62,700	62,700		140	47.9	155.0	62,600	62,600	62,600
	150	40.6	130.3	61,200	61,200	61,200		150	43.9	145.2	61,000	61,000	61,000
	160	35.7	117.5	59,900	59,900	59,900		160	39.6	133.9	59,700	59,700	59,700
	170	30.2	101.9	57,600	57,600	57,600		170	34.8	120.6	56,800	56,800	56,800
	180	23.4	81.9	57,700	57,700	57,700		180	29.4	104.5	56,000	56,000	56,000
	190	13.8	51.8	55,000	55,000	55,000		190	22.8	83.9	52,700	52,700	52,700
								200	13.5	53.0	55,000	55,000	55,000

rated boom loads in pounds													
Boom Length (ft)	Load Radius (ft)	Boom Angle Δ°	Boom Point Elev. (ft)	Rated Load (lbs)			Boom Length (ft)	Load Radius (ft)	Boom Angle Δ°	Boom Point Elev. (ft)	Rated Load (lbs)		
				360°	Over Side	Over Rear					360°	Over Side	Over Rear
210	35	81.8	215.0	81,500	81,500	81,500	220	36	81.9	224.9	81,500	81,500	81,500
	38	81.4	214.8	81,500	81,500	81,500		38	81.4	224.6	81,500	81,500	81,500
	40	81.0	214.5	81,500	81,500	81,500		40	80.9	224.3	81,500	81,500	81,500
	45	80.4	214.2	81,500	81,500	81,500		45	79.5	223.4	81,500	81,500	81,500
	50	79.0	213.2	80,000	80,000	80,000		50	78.2	222.4	81,500	81,500	81,500
	55	77.6	212.2	80,000	80,000	80,000		55	76.9	221.3	81,500	81,500	81,500
	60	76.2	211.0	80,000	80,000	80,000		60	75.5	220.1	81,500	81,500	81,500
	65	74.8	209.7	80,000	80,000	80,000		65	74.2	218.7	81,500	81,500	81,500
	70	73.4	208.3	80,000	80,000	80,000		70	72.8	217.2	81,500	81,500	81,500
	75	72.0	206.7	80,000	80,000	80,000		75	71.5	215.5	81,500	81,500	81,500
	80	70.5	204.9	80,000	80,000	80,000		80	70.1	213.8	81,500	81,500	81,500
	85	68.1	203.1	80,000	80,000	80,000		85	68.7	211.9	81,500	81,500	81,500
	85	67.6	201.1	80,000	80,000	80,000		85	67.3	209.8	81,500	81,500	81,500
	90	66.1	198.9	80,000	80,000	80,000		90	65.8	207.7	81,500	81,500	81,500
	95	64.9	197.1	80,000	80,000	80,000		95	64.7	205.8	81,500	81,500	81,500
	100	63.4	194.6	80,000	80,000	80,000		100	63.4	203.8	81,500	81,500	81,500
	110	60.3	189.2	80,000	80,000	80,000		110	61.8	200.7	81,500	81,500	81,500
	120	57.1	183.1	80,000	80,000	80,000		120	58.8	194.9	81,500	81,500	81,500
	130	53.8	176.1	80,000	80,000	80,000		130	55.7	188.4	81,500	81,500	81,500
	140	50.3	168.3	80,000	80,000	80,000		140	52.5	181.1	81,500	81,500	81,500
	150	46.7	159.4	80,000	80,000	80,000		150	49.1	172.9	81,500	81,500	81,500
	160	42.8	149.2	80,000	80,000	80,000		160	45.5	163.6	81,500	81,500	81,500
	170	38.6	137.4	80,000	80,000	80,000		170	41.7	153.0	81,500	81,500	81,500
	180	33.9	123.7	80,000	80,000	80,000		180	37.6	140.9	81,500	81,500	81,500
	190	28.6	107.1	80,000	80,000	80,000		190	33.1	126.7	81,500	81,500	81,500
	200	22.2	85.9	80,000	80,000	80,000		200	28.0	109.6	81,500	81,500	81,500
	210	13.1	54.1	80,000	80,000	80,000		210	21.7	87.8	81,500	81,500	81,500
								220	12.8	55.2	81,500	81,500	81,500

3222291

WARNING  Do not attempt to lift more than rated load at load radius shown, or lift where no radius or load is listed, as machine may tip or collapse. Do not attempt to lift more than rated loads shown in shaded areas — a machine failure may occur.

"on outriggers" front float set

two counterweights and one bumper counterweight

rated boom loads in pounds													
Boom Length (ft)	Lead Radius (ft)	Boom Angle Δ°	Boom Point Elev. (ft)	Rated Load (lbs)			Boom Length (ft)	Load Radius (ft)	Boom Angle Δ°	Boom Point Elev. (ft)	Rated Load (lbs)		
				360°	Over Side	Over Rear					360°	Over Side	Over Rear
230	37	82.0	234.9	40,900	40,900	40,900	240	39	81.9	244.7	34,800	34,800	34,800
	38	81.8	234.8	40,800	40,800	40,800		40	81.6	244.6	34,700	34,700	34,700
	40	81.3	234.4	40,600	40,600	40,600		45	80.4	243.8	34,500	34,500	34,500
	45	80.0	233.6	40,100	40,100	40,100		50	79.2	242.8	34,400	34,400	34,400
	50	78.7	232.6	39,800	39,800	39,800		55	78.0	241.8	34,300	34,300	34,300
	55	77.5	231.6	39,000	39,000	39,000		60	76.8	240.7	34,200	34,200	34,200
	60	76.2	230.4	38,500	38,500	38,500		65	75.5	239.4	34,100	34,100	34,100
	65	74.9	229.1	38,000	38,000	38,000		70	74.3	238.0	34,000	34,000	34,000
	70	73.6	227.6	37,500	37,500	37,500		75	73.1	236.6	33,900	33,900	33,900
	75	72.3	226.1	37,000	37,000	37,000		80	71.8	235.0	33,800	33,800	33,800
	80	71.0	224.4	36,700	36,700	36,700		85	70.5	233.2	33,700	33,700	33,700
	85	69.7	222.6	36,500	36,500	36,500		90	69.5	231.8	33,600	33,600	33,600
	90	68.3	220.6	36,300	36,300	36,300		95	68.2	229.8	33,500	33,500	33,500
	95	67.2	219.0	36,200	36,200	36,200		100	66.9	227.7	33,400	33,400	33,400
	100	65.9	216.8	36,100	36,100	36,100		110	64.3	223.2	33,300	33,300	33,300
	110	63.1	212.0	35,900	35,900	35,900		120	61.6	218.0	33,200	33,200	33,200
	120	60.3	206.5	35,800	35,800	35,800		130	58.9	212.2	33,100	33,100	33,100
	130	57.4	200.4	35,700	35,700	35,700		140	56.0	205.8	33,000	33,000	33,000
	140	54.3	193.6	35,600	35,600	35,600		150	53.1	198.6	32,900	32,900	32,900
	150	51.2	185.9	35,500	35,500	35,500		160	50.1	190.7	32,800	32,800	32,800
	160	47.9	177.4	35,400	35,400	35,400		170	46.9	181.7	32,700	32,700	32,700
	170	44.5	167.7	35,300	35,300	35,300		180	43.5	171.7	32,600	32,600	32,600
	180	40.8	156.8	35,200	35,200	35,200		190	39.9	160.4	32,500	32,500	32,500
	190	36.8	144.2	35,100	35,100	35,100		200	36.0	147.5	32,400	32,400	32,400
	200	32.4	129.6	35,000	35,000	35,000		210	31.7	132.4	32,300	32,300	32,300
	210	27.3	112.0	34,900	34,900	34,900		220	26.7	114.4	32,200	32,200	32,200
	220	21.2	89.7	34,800	34,800	34,800		230	20.8	91.5	32,100	32,100	32,100
	230	12.6	56.3	34,700	34,700	34,700		240	12.3	57.4	32,000	32,000	32,000

rated boom loads in pounds													
Boom Length (ft)	Lead Radius (ft)	Boom Angle Δ°	Boom Point Elev. (ft)	Rated Load (lbs)			Boom Length (ft)	Load Radius (ft)	Boom Angle Δ°	Boom Point Elev. (ft)	Rated Load (lbs)		
				360°	Over Side	Over Rear					360°	Over Side	Over Rear
250	40	82.0	254.7	33,500	33,500	33,500	250	40	82.0	254.7	33,500	33,500	33,500
	45	80.8	253.9	32,700	32,700	32,700		45	80.8	253.9	32,700	32,700	32,700
	50	79.6	253.0	32,500	32,500	32,500		50	79.6	253.0	32,500	32,500	32,500
	55	78.5	252.0	31,700	31,700	31,700		55	78.5	252.0	31,700	31,700	31,700
	60	77.3	250.9	30,900	30,900	30,900		60	77.3	250.9	30,900	30,900	30,900
	65	76.1	249.7	29,900	29,900	29,900		65	76.1	249.7	29,900	29,900	29,900
	70	74.9	248.4	28,700	28,700	28,700		70	74.9	248.4	28,700	28,700	28,700
	75	73.8	247.0	28,000	28,000	28,000		75	73.8	247.0	28,000	28,000	28,000
	80	72.8	245.8	27,000	27,000	27,000		80	72.8	245.8	27,000	27,000	27,000
	85	71.6	244.2	26,000	26,000	26,000		85	71.6	244.2	26,000	26,000	26,000
	90	70.4	242.4	25,000	25,000	25,000		90	70.4	242.4	25,000	25,000	25,000
	95	69.2	240.6	24,000	24,000	24,000		95	69.2	240.6	24,000	24,000	24,000
	100	67.9	238.6	23,000	23,000	23,000		100	67.9	238.6	23,000	23,000	23,000
	110	65.4	234.2	22,000	22,000	22,000		110	65.4	234.2	22,000	22,000	22,000
	120	62.9	229.3	21,000	21,000	21,000		120	62.9	229.3	21,000	21,000	21,000
	130	60.3	223.9	20,000	20,000	20,000		130	60.3	223.9	20,000	20,000	20,000
	140	57.6	217.8	19,000	19,000	19,000		140	57.6	217.8	19,000	19,000	19,000
	150	54.8	211.0	18,000	18,000	18,000		150	54.8	211.0	18,000	18,000	18,000
	160	52.0	203.6	17,000	17,000	17,000		160	52.0	203.6	17,000	17,000	17,000
	170	49.0	195.2	16,000	16,000	16,000		170	49.0	195.2	16,000	16,000	16,000
	180	45.9	186.0	15,000	15,000	15,000		180	45.9	186.0	15,000	15,000	15,000
	190	42.6	175.6	14,000	14,000	14,000		190	42.6	175.6	14,000	14,000	14,000
	200	39.0	164.0	13,000	13,000	13,000		200	39.0	164.0	13,000	13,000	13,000
	210	35.2	150.7	12,000	12,000	12,000		210	35.2	150.7	12,000	12,000	12,000
	220	31.0	135.2	11,000	11,000	11,000		220	31.0	135.2	11,000	11,000	11,000
	230	26.2	116.7	10,000	10,000	10,000		230	26.2	116.7	10,000	10,000	10,000
	240	20.3	93.3	9,000	9,000	9,000		240	20.3	93.3	9,000	9,000	9,000

32Z2291

WARNING

Do not attempt to lift more than rated load at load radius shown, or lift where no radius or load is listed, as machine may tip or collapse.

Do not attempt to lift more than rated loads shown in shaded areas — a machine failure may occur.